



Amarr® Rolling Sheet Commercial Doors

SELF-STORAGE DOORS



Perfect for most storage facilities, Amarr self-storage doors offer excellent performance and reliability at an economical price. These easy-to-install doors are a popular choice among DIY installers of storage sheds and building projects requiring a secure opening. All models are available in sizes starting as small as 3' wide.

Amarr 5101, 5151, 5161 SELF-STORAGE DOORS

Technical Features

1. 26-gauge galvanized steel curtain (Amarr 5161 is 24-ga)
2. Super Durable Polyester paint provides years of fade resistance and film integrity
3. Clear acrylic coated galvanized steel bottom bar with full width steel angle
4. Exterior dual lock assembly provides for two padlocks
5. Heavy-duty galvanized steel guides hot dipped for maximum strength and rust resistance
6. 9-1/2" drums are totally enclosed by the galvanized steel barrel assembly
7. Steel bearing shaft support
8. Adjustable tensioning device



LIGHT-DUTY SHEET DOORS

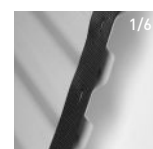


The Amarr light-duty commercial sheet door is an excellent choice for projects requiring value. The enclosed barrel assembly allows this door to fit into spaces with low headroom requirements. The Amarr light-duty commercial sheet door is designed to be economical without sacrificing performance, craftsmanship, or aesthetics.

Amarr 5501 LIGHT-DUTY SHEET DOORS

Technical Features

1. 26-gauge galvanized steel curtain
2. Super Durable Polyester paint provides years of fade resistance and film integrity
3. Clear acrylic coated galvanized steel bottom bar with full width steel angle
4. Dual galvanized steel slide bolt locks attached to the bottom bar
5. Heavy-duty galvanized steel guides hot dipped for maximum strength and rust resistance
6. Heavy-duty nylon strapping reduces friction and ensures smooth and quiet operation
7. 9-1/2" drums are totally enclosed by the galvanized steel barrel assembly
8. Steel bearing shaft support
9. 16-gauge wall mounting brackets
10. Reduced drive chain hoist standard for doors over 100 sq. ft.



	Amarr 5101 Formerly Amarr 5502	Amarr 5151 Formerly Amarr 5502-30	Amarr 5161 Formerly Amarr 5566
CURTAIN STEEL THICKNESS	26ga	26ga	24ga
DRUM/BARREL SIZE	9.5"	9.5"	9.5"
MAXIMUM WIDTH	10'	10'	8'8"
MAXIMUM HEIGHT	10'	12'	12'
GUIDE DEPTH	1.6"	1.6" or 2.3"	3"
GUIDE GAUGE	18ga	18ga	12ga
WIND LOAD RATED	No	Yes	Yes
WINDLOCK TYPE	n/a	Steel	Steel
MIAMI-DADE WL APPROVAL	No	No	Yes

	Amarr 5501 Formerly Amarr 5536
CURTAIN STEEL THICKNESS	26ga
DRUM/BARREL SIZE	9.5"
MAXIMUM WIDTH	12'
MAXIMUM HEIGHT	14'
GUIDE DEPTH	2.3"
GUIDE GAUGE	16ga
WIND LOAD RATED	No
WINDLOCK TYPE	n/a
MIAMI-DADE WL APPROVAL	No

HEAVY-DUTY SHEET DOORS



The heavy-duty line of Amarr commercial sheet doors are engineered for door openings with more demanding applications. These doors are typically found on warehouse docks with up to 18' wide openings. The combination of heavy-duty sheet door features and the reduced labor requirement due to ease of install, make these doors an affordable choice for most projects.

Amarr 5601 HEAVY-DUTY SHEET DOORS

Technical Features

1. 26-gauge galvanized steel curtain
2. Super Durable Polyester paint provides years of fade resistance and film integrity
3. Clear acrylic coated galvanized steel bottom bar with full width steel angle
4. Dual galvanized steel slide bolt locks attached to the bottom bar
5. Heavy-duty galvanized steel guides hot dipped for maximum strength and rust resistance
6. Heavy-duty nylon strapping reduces friction and ensures smooth and quiet operation
7. 12" enclosed barrel
8. Steel bearing shaft support
9. 12-gauge wall mounting brackets
10. Reduced drive chain hoist standard for doors over 100 sq. ft.



	Amarr 5601
CURTAIN STEEL THICKNESS	26ga
DRUM/BARREL SIZE	12"
MAXIMUM WIDTH	18'
MAXIMUM HEIGHT	18'
GUIDE DEPTH	2.3" up to 12' w / 3" 12'1" - 18' w
GUIDE GAUGE	16ga up to 12' w / 12ga 12'1" - 18' w
WIND LOAD RATED	No
WINDLOCK TYPE	n/a
MIAMI-DADE WL APPROVAL	No

HEAVY-DUTY WIND LOAD SHEET DOORS

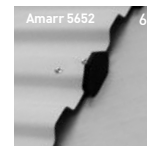


Manufactured to protect property and products in storm prone areas, the line of Amarr heavy-duty wind load certified sheet doors has a variety of models to fit your wind load certification needs, including Miami-Dade. The smooth operation of the nylon windlocks also makes the 5652 an ideal option for most oversized commercial applications.

Amarr 5652, 5651, 5661 HEAVY-DUTY WIND LOAD SHEET DOORS

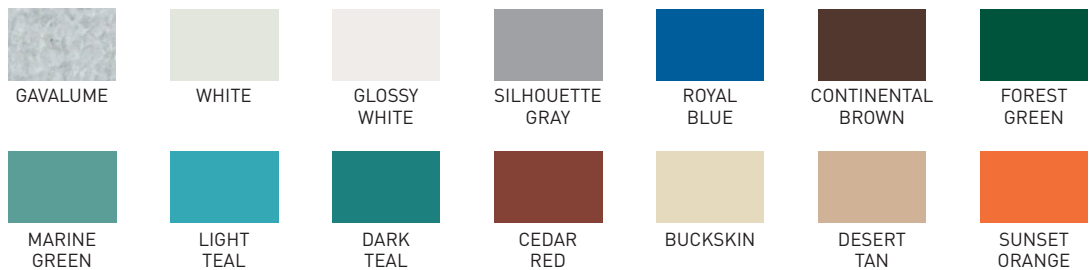
Technical Features

1. 26-gauge galvanized steel curtain
2. Super Durable Polyester paint provides years of fade resistance and film integrity
3. Clear acrylic coated galvanized steel bottom bar with full width steel angle
4. Dual galvanized steel slide bolt locks provide for two padlocks and added security
5. Heavy-duty galvanized steel guides hot dipped for maximum strength and rust resistance
6. Nylon windlocks on the Amarr 5652 provide wind load protection without sacrificing ease of operation
7. Steel windlocks on the Amarr 5651 and Amarr 5661 provide maximum wind load protection in extreme weather locations
8. Steel bearing shaft support
9. 12-gauge wall mounting brackets
10. Reduced drive chain hoist standard for doors over 100 sq. ft.



	Amarr 5652	Amarr 5651	Amarr 5661 Formerly Amarr 5651-DCC
CURTAIN STEEL THICKNESS	26ga	26ga	24ga
DRUM/BARREL SIZE	12"	12"	12"
MAXIMUM WIDTH	18'	20'	12'
MAXIMUM HEIGHT	20'	18'	20'
GUIDE DEPTH	2"	4"	4"
GUIDE GAUGE	12ga	12ga	12ga
WIND LOAD RATED	Yes	Yes	Yes
WINDLOCK TYPE	Nylon	Steel	Steel
MIAMI-DADE WL APPROVAL	No	No	Yes

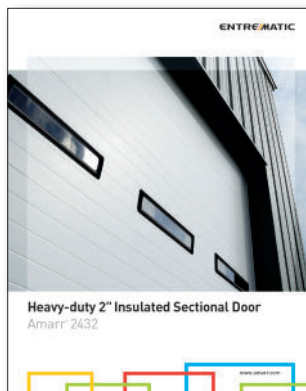
COLORS Actual paint colors may vary from samples shown.



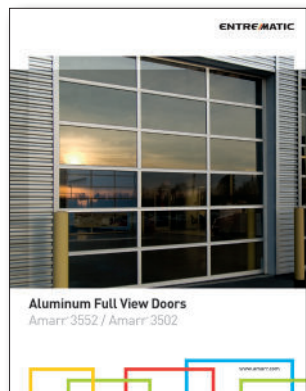
OTHER COMMERCIAL MODELS AVAILABLE



Rolling Steel



Sectional



Sectional Full View

WARRANTY

Products guaranteed to be free from defects in workmanship and materials for a period of 1 year from date of factory shipment. There is a limited 25-year warranty on the paint and finish.

ENTRE/MATIC

Entrematic
165 Carriage Court
Winston-Salem, NC 27105
800.503.D00R
www.amarr.com

FOR TECHNICAL
QUESTIONS:
1.866.366.4814



Our Philosophy. Since 1951, we have successfully raised the standards of quality, value, and dependability in our industry. Today, with the same promise of individual attention and great value for all our customers, we remain committed to offering products and services that raise those standards even higher.

Technical data subject to change without notice.

Entrematic products may be the subject of one or more U.S. and/or foreign, issued and/or pending, design and/or utility patents.

Entrematic and Amarr as words and logos are trademarks owned by Entrematic Group AB or companies with in the Entrematic Group.
©Entrematic Group AB 2015. All rights reserved.
Printed in USA Form #6120915/12M/GVS